

Cabled Beret

By OctoStag - octostag.blogspot.com



Supplies

- Yarn – Every yarn with a gauge of **11-12 stitches = 10cm/4inch** should match the measurements. You can use yarns such as Wolle Rödel Polar or Drops Eskimo. You can also use a different yarn with the same gauge but always check the gauge and your measurements first. You'll need about **75g**.
- Needles – I used 6mm/US 10. You can use circular needles and double pointed ones, only DP or magic.
- Also need a cable needle, stitch markers, tapestry needle and scissors.

Measurements & Sizes

This pattern has charts for 3 different sizes – S, M and L.

Size S is a smaller and close-fitting.

Size M is a little wider and slouchy.

Size L is really big and wide.

The numbers of stitches for the cuff are the same for all 3.

I am making the beret for a head circumference of 56cm = 64 stitches. That makes 8 pattern repeats.

You can alter the circumference to your desired measurements by simply doing more or less pattern repeats.

Mind that the cuff is going to be a little elastic – so don't make it too wide.

You should definitely do your own gauge – especially if you are using different yarn or needles.

Let's knit it!

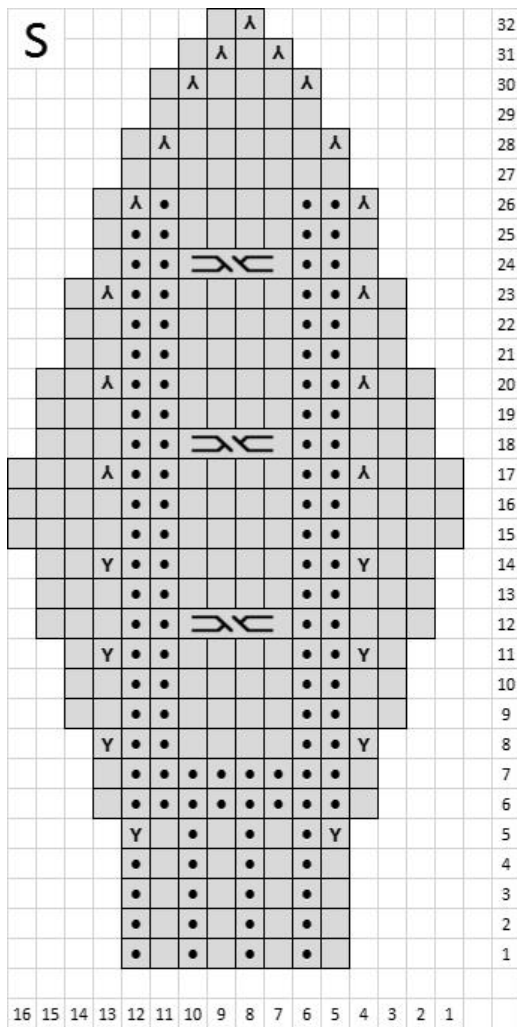
Cast on **64** stitches and place a marker after every **8** stitches. These are your pattern repeats.

Then follow the instructions on the pattern chart for your desired size.

After finishing the chart you should have 8 stitches left.

You can either knit them together further or just pull the thread through all of them and sew them together.

Sew in the loose thread ends and now you are finished.



- Knit
- Purl
- Y Make one
- λ Knit 2 together
- C4F cable 4 front, by putting the 2 stitches on the cable needle in front of the work

